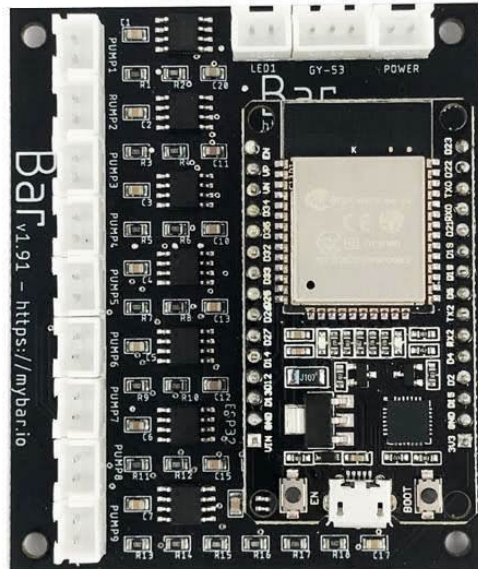


MyBar.io

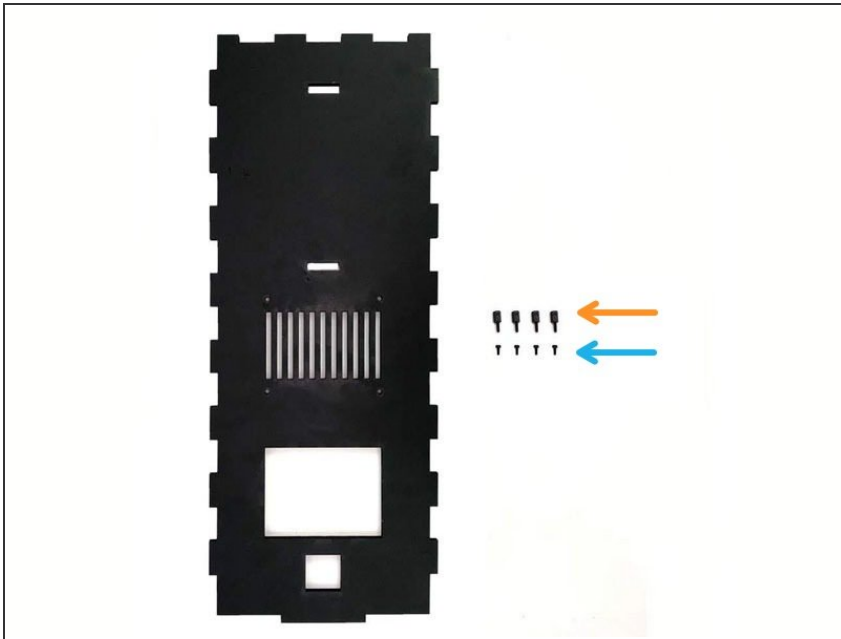
2. Electronics

In this step we will connect all the wires to the custom circuit board.

Written By: MyBar.io

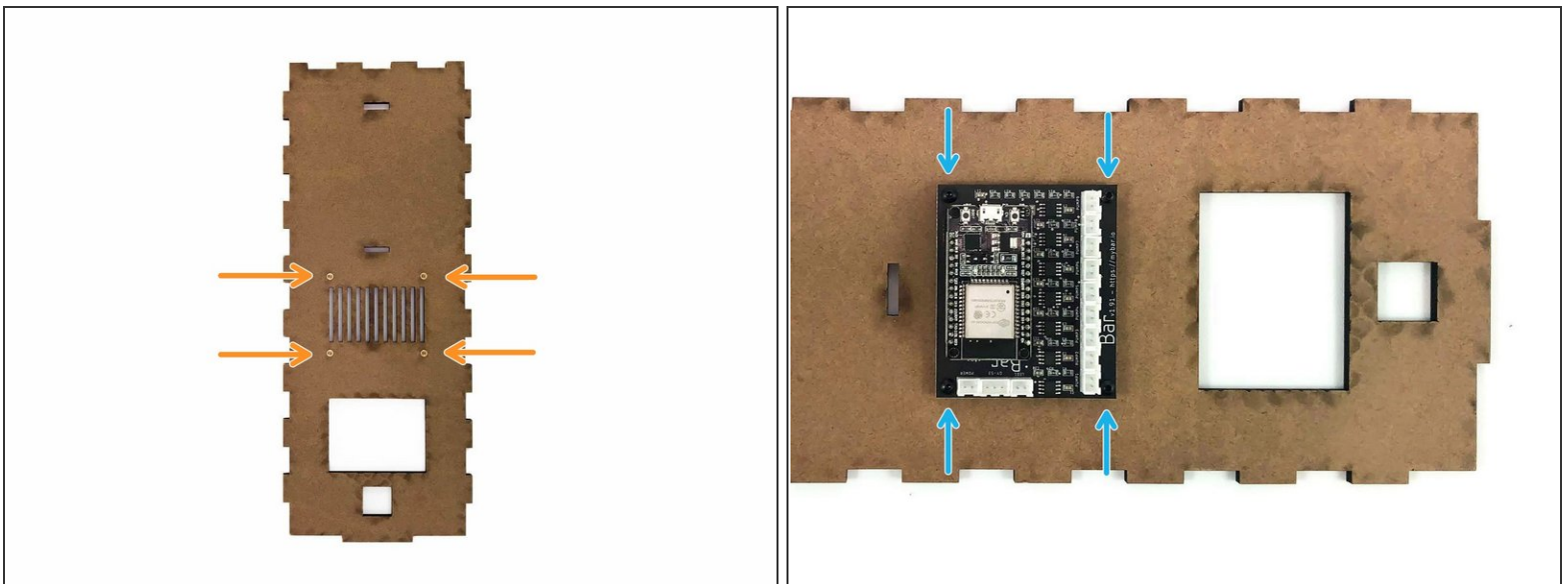


Step 1 — Back panel (Components)



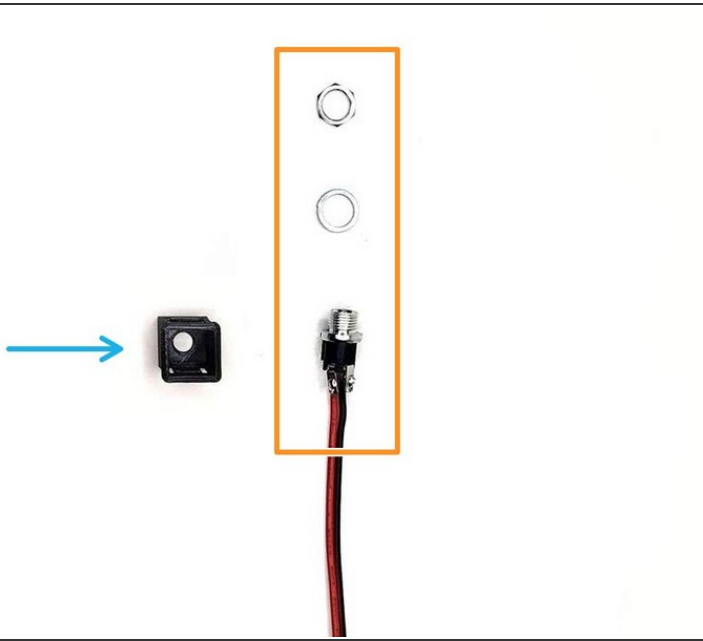
- Back panel
- Spacers M3 6mm (4x)
- Screws M3 4mm (Black) (4x)

Step 2 — Back panel



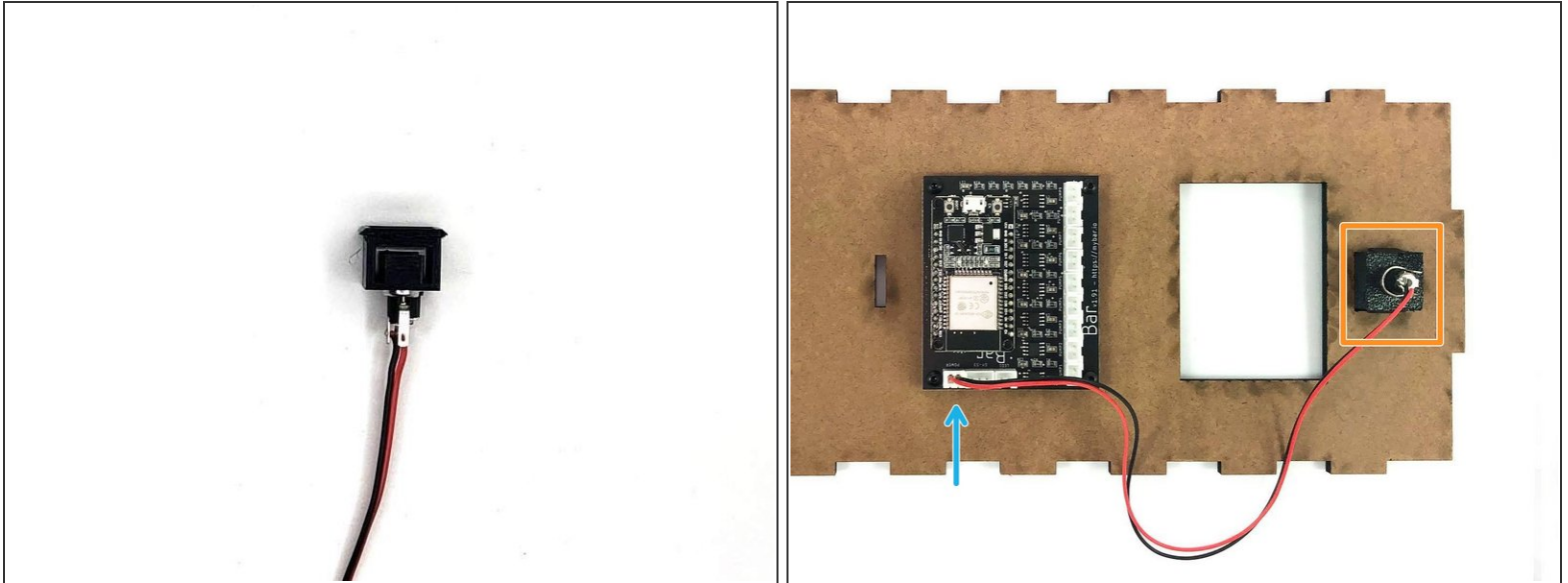
- Insert the spacers on the back panel.
- Using the M3 4mm screws mount the circuit board to the spacers.

Step 3 — Mount Power Jack (Components)



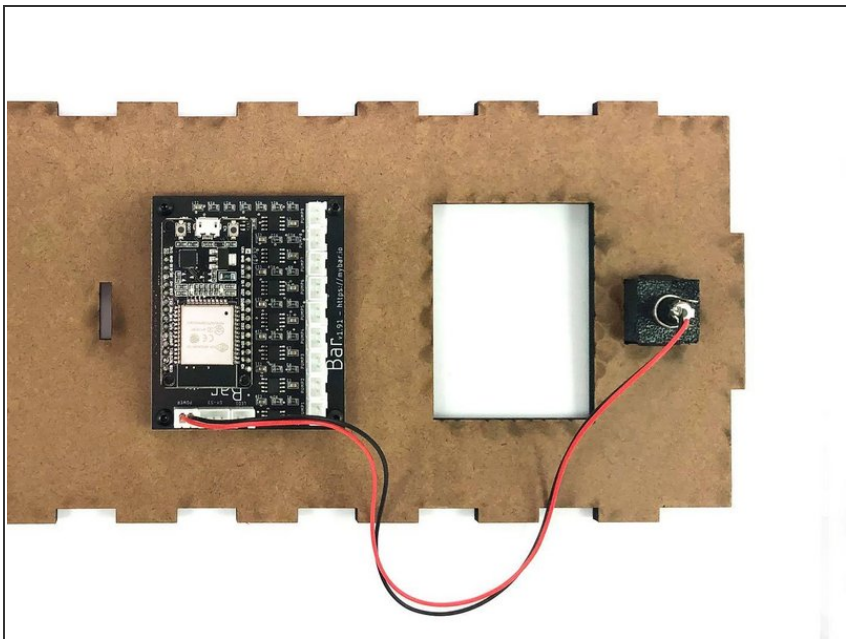
- Power Jack
- Power Jack holder

Step 4 — Mount Power Jack



- Insert the washer into the power jack.
- Insert the power jack (with the washer) from the back of the holder and secure it with the nut.
- Insert the power jack holder into the back panel
- Connect the power wire to the circuit board

Step 5 — Awesome!



- Perfect! Electronics ready. Next, lets start with the [3. Case assembly](#)